



# Heritage Trails

## Middle Road - Poukawa Valley (Tukituki River)



*Mt Kahuranaki from Blind Road*

*Ivan Hughes*

## HAWKE'S BAY

the Real  
Discover  New Zealand

*The trail begins at...*

**Havelock North Information Centre** at the roundabout, corner Middle and Te Aute roads, Havelock North (phone 877 9600).

This 1914 building, designed by James Chapman-Taylor, originally housed the transformer for power generated by the Maraetotara power scheme. (see Waimarama Heritage Trail brochure).



*Havelock North Information Centre*

*Ivan Hughes*

*Note: Distances may vary slightly between vehicles. Distances shown in red are from the last site.*

*0.0km Commencing on Te Aute Road turn left onto Porter Drive and then right onto...*

**Middle Road** was one of the first local roads of any length connecting Havelock North with Central Hawke's Bay. Middle Road runs close to the route of an ancient Maori foot track from East Clive to the south. The other well-used track going south was via Pakipaki and Poukawa.



*Lucknow Lodge*

*T. Longley*

**0.3km Lucknow Lodge** (1895), on the corner of Middle Road and Lucknow Road, is now a private residence. It was built on the site of a stopping place for bullock drays, since around 1855, freighting wool bales to ships anchored off the Tukituki River mouth and later to the Port of Napier. This lodge, built by W A Becroft who ran a passenger service between Hastings and Havelock North, (see Heritage Trails - *Havelock North Architectural*

Drive – site #1 Endesley ) started as a livery stable and depot for horse drawn buses until John G Nimon, who worked for Beecroft, purchased the business in 1900. By 1912 the Nimon business was running Studebaker buses between Hastings and Havelock North. Later they expanded to operate local bus services as well as motor coach services throughout New Zealand.

2.4km (2.1) **Providencia Country House** is a beautiful mainly kauri and rimu building built in 1903 at 401 Railway Road Hastings on the site now occupied by Portmans Motor Lodge. It was moved to the present location in 1994 and restored as a luxury bed and breakfast guest house.

3.1km (0.7) **Birdwoods Gallery**, where New Zealand and African works merge to reflect traditional and contemporary arts, was originally St Peter's Church hall (circa 1890) in Waipawa. The hall was moved to the present site in 2004, renovated and opened in 2005. Adjacent to the gallery is Birdwoods Sweet Shop, a pint-sized, one room colonial cottage built from reclaimed materials in 2006.

3.5km (0.4) This was the site of **Webb's Nursery** (#345) which had been a source of plants since 1902. In 1945 the nursery donated trees and plants for Webb's Bush in Te Mata Trust Park. The nursery closed in 2002.

6.5km (3.0) **Webster's Hydrated Lime Co. Ltd.** is a family owned business that was formed in 1946 and first operated from a quarry in Waimarama Road on the eastern side of the Tukituki River bridge. In 1963 the present quarry was purchased in Middle Road and by the late 1960s the company had relocated its production to this site. In mid-1968 the company produced the first burnt lime and in 1972 they introduced their first bulk tanker and started road stabilization. At the present site lime is quarried and various lime based products are distributed throughout New Zealand and also exported to Fiji. In 2008-09 they purchased a new quarry area (11 hectares) which will give the company lime reserves for up to 70 years.

10.0km (3.5) **Road to Mt Erin** – this private road gives access to the transmission towers on Mt Erin (489m).



*Drovers' Memorial Hut*

*Ivan Hughes*

11.5km (1.5) **Drovers' Memorial hut** is dedicated to Trooper James Edward Oliver who was killed in action in Egypt in 1942. Prior to enlisting in the cavalry Oliver was a drover in Hawke's Bay. This is one of three huts in the district dedicated to drovers who lost their lives while serving overseas.

Alongside is the home of J & S Scott, railway enthusiasts, who have, amongst their collection, a 1908 kauri railway carriage which is visible from the road.

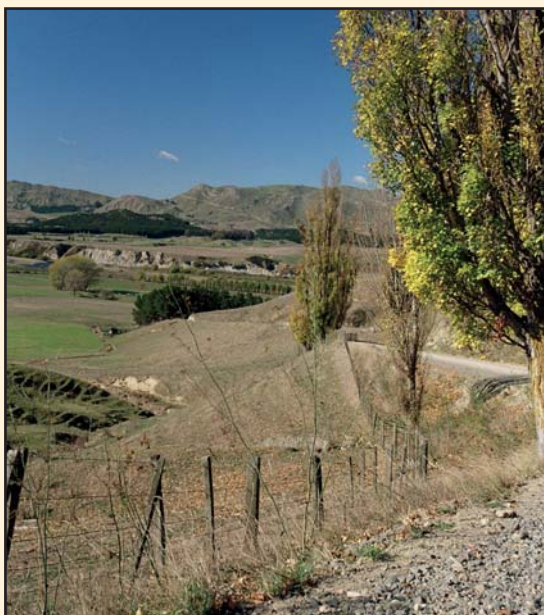


*Memorial Plaque to Trooper Jack Oliver*

*Ivan Hughes*

13.5km (2.0) **Blind Road** (6.5km to gate at end of road) – previously known as Kahuranaki Road and through a ford gave access to Rochfort Road and Kahuranaki Road on the eastern side of the Tukituki River. Blind Road leads up the Kohinurakau Range to view Mount Kahuranaki (646m) visible from most high points on this Trail.

Mount Kahuranaki, sacred to the Maori, was used as a navigational landmark or weather portent.



*Mt Kuhuranaki from Blind Road - Tukituki River in mid-ground*

*Ivan Hughes*

The Tukituki River is regarded by anglers as a highly productive river for both rainbow and brown trout along its 120km length. Originating in the Ruahine Range behind Waipukurau the river flows across Hawke's Bay before entering the sea at Haumoana. There are vast areas of the river that anglers can legally access to fish. The Hawke's Bay Regional Council owns and administers large sections of the river which are available for public access. In addition Fish and Game New Zealand has negotiated access with landowners across some areas of private land. For further information please refer to Fish & Game New Zealand pamphlet 'Tukituki River Fishery'.



First load of wool to cross Tukituki River at Blind Road Awarua HT Pamphlet



The load spills

Awarua HT pamphlet

21.5km (8.0) **Paramahonge Gorge**. Entering the Tukituki Valley by way of a pass through the hills, one can understand the local meaning of 'tukituki' (to demolish) for this river in flood has enormous power with its catchment starting from the dividing ranges. Here the river sweeps into Paramahonge Gorge, a 2km erosion channel following a fault line in the old gravel and pumice beds.

Below on the river flats was the site of Ngawhakatatara, a large island pa in the river, where travellers and missionaries arrived by horse or canoe. Lighters (large rowboats) from the coast often reached Waipawa with their passengers and supplies to collect bales of wool and timber. These boats were frequently moored, across the river from the pa, by a bush hotel where a stand of eucalypt trees mark the site.



Paramahonge Gorge

Ivan Hughes

*On a sharp corner the Trail passes the site of Te Hinu Pa on the right and its kianga on the flat below the road. When the sun is low in the sky signs of earthworks can be seen in the shadows. Here the Papanui Stream (old bed of Waipawa River) flows parallel to the Tukituki River and Middle Road, providing a canoe route over the hills to Lake Poukawa and the normally dry Lake Rotoatara.*

24.5km (3.0) A collection of buildings on the left is where the Christian Adventure Centre, Camp David, (now closed - 2009 - after 22 years of hosting school holiday programmes on the banks of the Tukituki River), was sited.

In this area sprawled Patangata Pa and further upstream on a small hill Te Ahu Pa. In the 19<sup>th</sup> century the population of this valley was quite considerable but by 1850 this number had seriously declined and was later further drastically reduced by the 1918 Spanish Influenza epidemic. Added to this, bush clearance and cycles of mountain erosion silted up the river closing the navigable link from the sea to Waipawa.

*Turning right into...*

27.0km (2.5) **Te Aute Trust Road** the Trail leads up past Whatuiapiti Marae below the highest point (411m) on the Kaokaoroa Range. Its meeting house was moved part way here by bullock team from Te Ahu following disastrous floods and later relocated to the present site in the early 1950s.

*On a small hill to the left further on are unusual macrocarpa timber solar houses with turf growing on the roofs.*

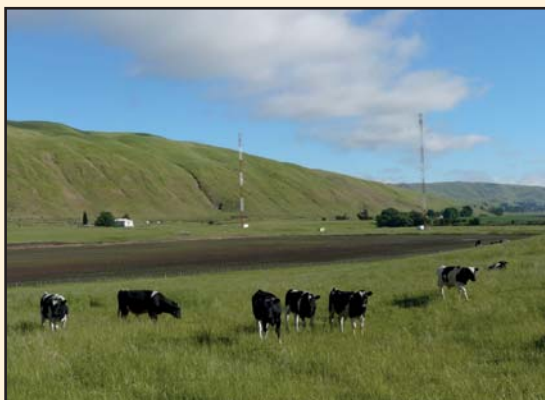


Te Karaka Bush - Te Aute Trust Road

Ivan Hughes

Over the Pukeparera Saddle is a stand of native trees known as Te Karaka, while to the right, out of sight, is the site of Lake Rotoatara, drained by the Williams family, which features prominently in the area's history from the 1300s. It has been said that the intertribal battles in the area of Te Rotoatara were some of the biggest and most drawn out in pre European history.

34.5km (7.5) **Kauahei** farm (#414) Mrs Pat Barker breeds coloured sheep and retails their fleeces either greasy or carded ready for spinning, attracting spinners and weavers from all over New Zealand (phone 06 878 1522).



Opapa Radio Transmitting Station from Te Aute Trust Road Ivan Hughes

**CAUTION...** Because of the high speed traffic on the highway (SH2) and the difficulty of turning, it is suggested that both the following sites be viewed safely from Te Aute Trust Road.

**Opapa Radio Transmitting Station** (0.5km on SH2 on right) was built in 1938 by The New Zealand Broadcasting Service in a classical version of Art Deco. The two masts are 300ft/90m high and are 640 feet or exactly one wavelength apart. During the years various aerial configurations have been used to suit the many radio stations that have broadcast from this site. At present (2009) four stations are operating from this site and the original T-aerial wire cable has been reinstated between the masts. At one time several staff members lived at the complex. There were four houses on site.

**Opapa Railway Station** (1.0km on SH2 on right) opened in 1876 as Te Aute but was renamed Opapa in 1913. It was a key point between Napier and Palmerston North as a banking engine, which pushed trains up the steepest incline on the track, was located here. During the years 1897 to 1945 a refreshment room operated from here and the station building and crossing loop remained in use for 'tablet' train control until 1991. A group of volunteers is restoring Opapa Railway Station to reopen it to the public.



Opapa Railway Station

Ivan Hughes

38.5km (4.0) turn left south onto SH2 and pass the old Te Aute Store (refer 'Highway Two Central Hawke's Bay Heritage Trail' brochure) and Te Aute Hotel, built in Spanish Mission, on left. Aute is also the name of a tree, the paper mulberry a native of Asia, used to make tapa cloth and believed to have been carried on most Maori canoe migrations and was listed among the plants carried on the Tainui Canoe.

Travel approximately 3km and turn right onto...

42.0km (3.5) **Te Onepu Road.** This road is well known amongst car club enthusiasts throughout New Zealand for the hill-climb events held here. The course is about one mile in length and the first event was held in 1955. During 1960 and 1971 the course was closed while the road was re-aligned and the events were held on nearby College Road. In 2005 Hawke's Bay (Sports) Car Club celebrated 50 years of Te Onepu Road hill-climb events.

50.0km (8.0) At the top of the hill junction with Argyll Road turn right onto Raukawa Road. Pass Monks, Taheke, Whakapirau and Valley roads on left and Anaroa Road on right before reaching Burma Road. Along this high section of road enjoy the many extensive scenic vistas and note the power transmission lines running between Fernhill and Bunnythorpe.

This area is geologically interesting because of the many earthquake faults and limestone springs.

Te Mata Peak (399m)

Mt Erin (489m)

Mt Kahuranaki (646m)

Burma Road





Signpost Ruakawa / Whakapirau Roads junction

Ivan Hughes

At Anaroa Road intersection you are passing through historic Ruakawa Station which in the 1860s contained approximately 15,000 acres and by the late 1880s the Ruakawa flock numbered approximately 14,000 sheep. Ruakawa, a small tree with glossy leaves, was used by the Maori as a scent or worn as a chaplet of leaves by the women. Of the several owners of Ruakawa, J McDougal constructed the fine old buildings, F P DuCroz laid out the gardens and tree lined drive and the homestead was redesigned by Napier architect Walter A Dugleby on the Raj bungalow style. Robert Harding took over the property in 1905 to breed pure Romney sheep on a 'showplace' farm.

65.5km (15.5) At **Burma Road** turn right (road ahead leads to Bridge Pa settlement passing the original Greenhill Homestead 7.5km where members of Royalty have stayed during their visits to this country). Burma Road climbs the 4km Orangihukai Valley to the crest of the Ruakawa Range for a superb panorama of Lake Poukawa basin and the surrounding hills with the site of Te Wheao Pa on a lower spur near Te Hauke School (closed 2009). At this pa, young chiefs of the area received training in culture and warfare, hence the saying 'Te Wheao is the pa and Te Whatuiapiti is the man' (the great chief of the 1650s).

*Panorama from Burma Road Lookout - Lake Poukawa (with surface flooding Nov 2009)*

Don Trask



**Lake Poukawa:** *pou:* pole: *kawa:* lean: so named it is said, following a disagreement between two local chiefs Te Rangihirawea and Te Rangikawhiua over fishing rights in the lake. Te Rangihirawea stuck a pole in the lake to mark the boundary of his part, leaving the less favourable part and its lean eels (*tuna kawa*) to his opponent. This pole is in the Museum of New Zealand Te Papa, Wellington.

Lake Poukawa was a maze of waterways, tree stumps, swamp grasses and raupo. Various farmers attempted to drain the swamp but in the 1950s Harry Brownrigg obtained a lease over the swamp. He spearheaded a programme of reclamation using huge bulldozers, swamp ploughs and giant discs and at times herds of up to 200 horses to consolidate the swampy surface and to eradicate the infestations of raupo and enormous stands of fescue. The horses were no longer required after 1958.

Since then further Brownrigg family members have continued reclaiming the land which is used for mainly cropping, sheep and cattle – Kobe beef being a special line. Strip farming is a visual feature of the type of agriculture practised in this area and even today tree stumps are still coming to the surface.



*Poukawa Strip Farming - Brownrigg Agriculture*

*Ivan Hughes*

As the area in the vicinity of the lake is composed largely of peat there is a considerable fire risk in times of drought. A control gate, near Douglas Road at the northern end of the lake, was built in 1927.



*Lake Poukawa Control Gates*

*Ivan Hughes*

During normal weather conditions the level of water in the lake can vary considerably and flows to the north through Pekapeka Wetland.

72.5km (7.0) At SH2 turn left north ...

**Te Hauke** (1km on SH2 south) The Ngati Rangikoianake subtribe (hapu) built a meeting house 'Kahuranaki' named after their sacred mountain but in 1893 it was destroyed by fire. Local people rebuilt the present carved meeting house which opened in 1915, the third on this site, and was opened by Princess Te Puea.

The fine carving was undertaken by Arawa artisans from Rotorua under the direction of Heke Kapua.

*Continue north on SH2.*

75.5km (3.0) Poukawa Road. **D & F Brownrigg** A notable garden in Douglas Road (#36) via Poukawa Road - 1.5km. Visits by appointment phone 06 874 8801.

76.5km (1.0) **On-Farm Research** is now a privately owned research company. It was originally established by AgResearch in 1989. Throughout the years the facility has contributed greatly to sheep productivity, calf rearing techniques and pasture work relevant to New Zealand and the East Coast area.

*Unseen over the hills to the left past Horonui Road where the Raukawa Range and the Horonui ridge close in on the village of Pakipaki there is a large concentration of pa sites in close proximity. One particular of note is Waikoukou Pa, an unusual flatland pa, which formerly guarded the end of the swamps of Pakipaki. The earthworks are sharp and in quite good order.*

77.5km (1.0) On left is a pleasant rest area under large oak trees. There are picnic tables and an information board.



Pekapeka Wetlands 2009 - Restoration of Wetland in Process

Ivan Hughes

81.0km (3.5) **Pekapeka Wetland.** This area of around 90ha is part of the outflow north from Lake Poukawa to the Awanui Stream near Pakipaki. The wetland is approximately 4.5km long and 0.8km wide at its widest part and is adjacent to SH2 and the Wellington - Napier Railway. It is a remnant of a former extensive wetland system which covered most of the Poukawa basin. It is one of the few remaining large wetlands left in Hawke's Bay.

In pre-European times this wetland was rich in bird and fish life and was well known for its abundant supply of eels. Over the years this slow moving wetland had become choked with numerous varieties of trees and weeds to the detriment of the natural flora and fauna.

So in 1998 Hawke's Bay Regional Council, in conjunction with many others, embarked on an environmental restoration programme to halt the degradation of the wetland and to improve its ecological value.

It is envisaged that the programme will be completed by 2010. Plans include an off road car park, information panels, viewing/observation areas and a series of bridges and boardwalks to make the wetland more accessible to the public thus allowing them to appreciate this historic, heritage and culturally valuable area.

*Opposite the entrance to Pekapeka Wetland is a large tapu rock Te Anaoteaomutua that is connected with the burial of tribal elders. It is said that, on the way to the burial cave, the bier (litter) was laid on the hill beside the rock to rest the bearers, while the spirit of the dead man rested on the rock.*



*Cutting Raupo - Pekapeka Swamp. Raupo provided packaging for roots of young fruit trees to prevent drying out when transporting to orchards throughout NZ and abroad*

*John Fortnam*



*Smoko for Raupo Cutters - Pekapeka Swamp C1920*

*John Fortnam*

84.0km (3.0) **Firth Industries Lime Quarry.** In 1867 W A Amner, a lad of 16 years, arrived in Napier on the sailing ship *Montmorency*, the wreckage of which is in the sea approximately 30 metres offshore from Spriggs' Park, Ahuriri (see Ahuriri Heritage Trail pamphlet). In the late 1800s he established an almost two hectare quarry in

Milton Road, Napier for the production of lime based products for use in both agriculture and industry. In 1939 operations were ceased owing to the danger to homes perched above the quarry face.

About 1941 Mr Amner's son and grandson purchased The Pakipaki Lime Quarry which had been in existence since before 1915.

In 1972 Firth Industries Ltd purchased the plant, land and operations from the Amner family. Firth Industries, now owned by Fletcher Concrete & Infrastructure Limited, have since installed a modern plant and have built up a tonnage of 80,000 to 100,000 tonnes per year. Products from the quarry find use in agriculture, horticulture, road and reclamation work and various building products.

85.5km (1.5) **Pakipaki**, an abbreviation of Te Pakipakiohinetemoa, the place where Hinetemoa, caught naked while bathing, snatched up her skirt (rapaki), and huddled it (pakipaki) around her shoulders. This area supports a large Maori population, with three active marae, Houngarea, Mihiroa and Taraia and the original timber Catholic Church of the Immaculate Conception, close to the privately owned stone Church of Saint Luke.

*Continue ahead towards Hastings beside the railway line to pass on left the site of the old Borthwicks' Freezing Works which was situated approximately behind Alto Packaging (formerly Plix Products) and Hawthorne House.*

86.5km (1.0) **Borthwicks' Freezing Works**. In 1904 an English firm Borthwick Brothers, one of the largest buyers of meat in the world, acquired land adjacent to the railway line at Longlands near Pakipaki. The most up-to-date freezing works in the country was opened in 1906 along with ten houses and a boarding house for single men.

The freezing works was severely damaged in the 1931 Hawke's Bay Earthquake and was not rebuilt. As the earthquake occurred during 'smoko break' most employees were outside. Fortunately the 80,000 'freight carcasses' in the store were saved by being freighted to Wellington by rail and shipped overseas.

*Continue towards Hastings passing through Longlands Road intersection.*

The notable dip in the road crosses the Irongate Stream 89.0km (2.5) which was the course of the Ngaruroro River prior to the big flood of 1867 which altered dramatically the river's flow from Roy's Hill to Chesterhope.

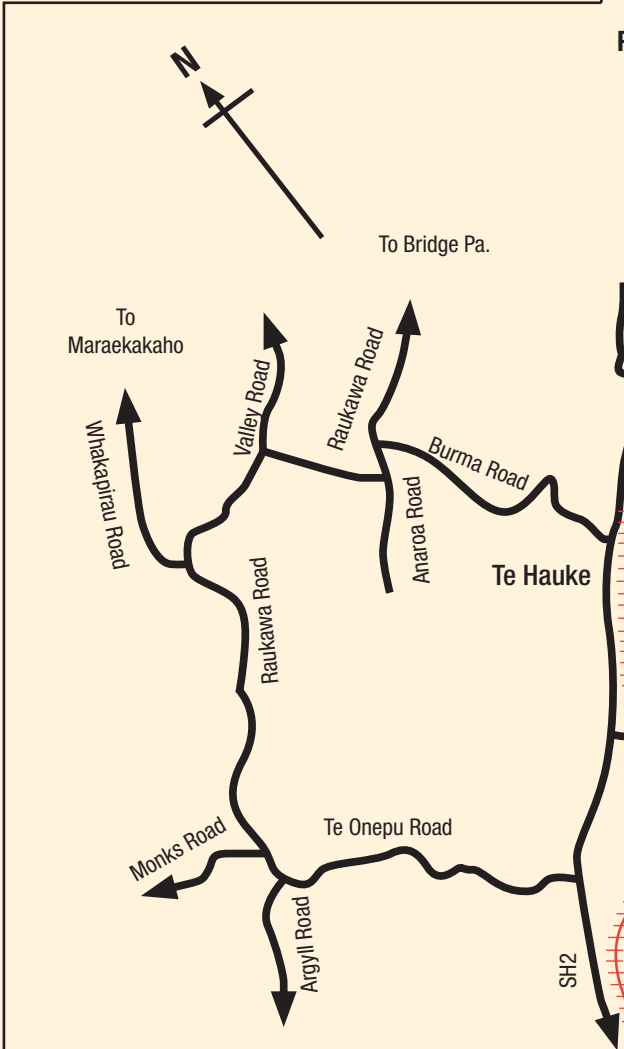
Note also on the right the wooden stringer railway bridge over the Irongate Stream. This section of railway line, to Pakipaki, was opened in 1875 soon after the Napier to Hastings section was opened in 1874.

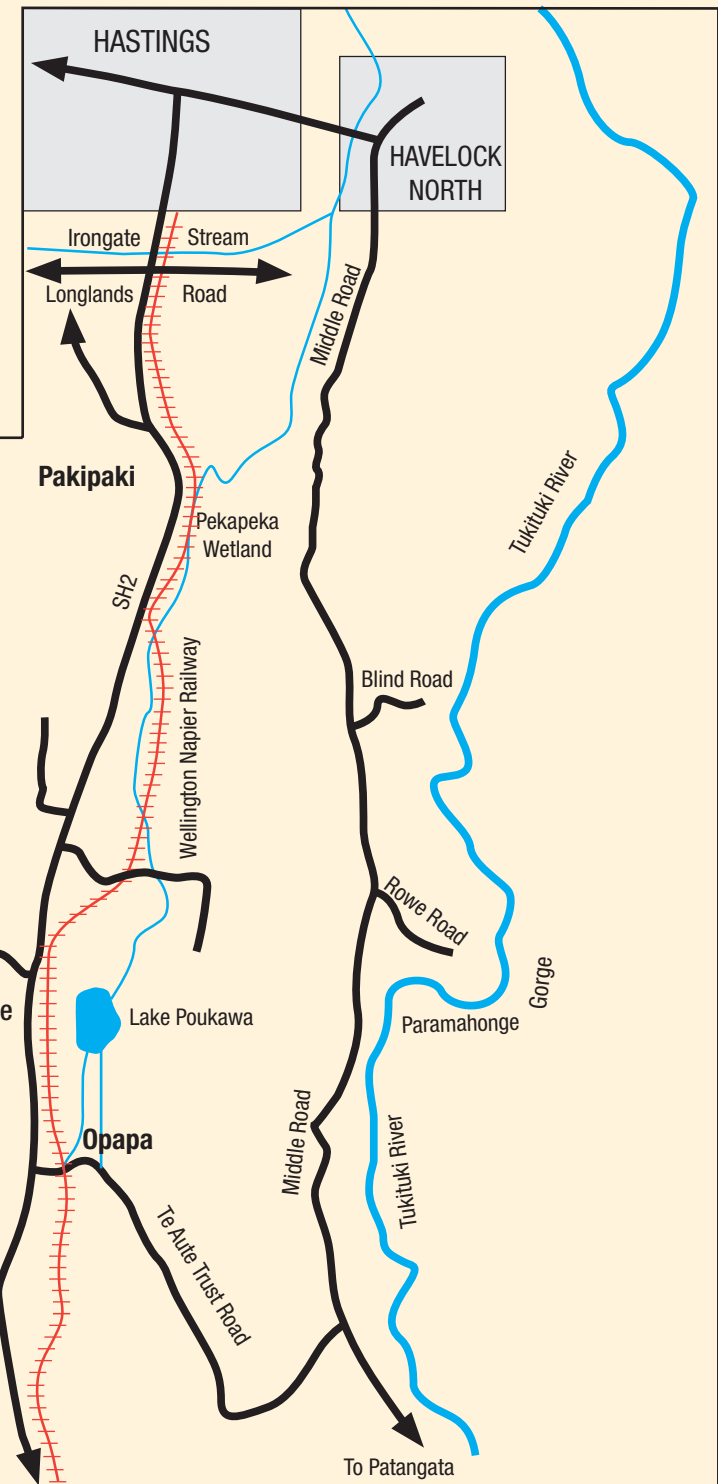
*Continue on Railway Road passing on left the Hawke's Bay Jockey Club racecourse.*

*At second set of lights 92.6km (6.1) turn right on Eastbourne Street (crossing the railway) then immediately left on Russell Street to end the Trail at Hastings i Site 92.7km (0.1).*



Rail Bridge over Irongate Stream - old bed of Ngaruroro River Ivan Hughes





## Acknowledgements:



Firth Industries - Lime Quarry

Webster's Hydrated Lime Co.

Derek Brownrigg

Stephen Cave

Jerry Hapuku

K R (Spud) Langley

Patrick Parsons

People dwelling along the Trail

## Research:

Committee - Hastings District Heritage  
Trails Society Incorporated

Edited by Maurice Bartlett and Ivan Hughes

## References:

*Opening The Gate* – The story of the Te Aute District

*City of the Plains* – A History of Hastings – M B Boyd

*The Maori History and Place Names of Hawke's Bay* –  
J D H Buchanan

*Wises New Zealand Guide*

Based partially on previous  
*Awarua Heritage Trail pamphlet - Tukituki Section*

Published 2010

GEON